

# Automatic Early Leaf Spot Disease Segmentation on Cotton Plant Leaf

Khushal Khairnar, Sajidullah Khan

**Abstract:** Diseases are decreasing production of plants. At present, farmers are identifying, diagnosing diseases and monitoring health in plants by their own knowledge and experience. Naked eye observation by farmers and experts on big plantation areas cannot be possible each time and it can be expensive. Accurate identification of visually observed diseases, symptoms and controls has not studied yet. Therefore a fast automatic, economical and accurate system is an essential research topic that may improve in leaf disease detection of plant disease. The proposed automatic early leaf spot disease segmentation on leaf of cotton plant system is based on image processing and machine learning where segmenting the three major diseases such as Bacterial Blight, Alternaria leaf spot and Cercospora leaf spot. Initially, the infected leaf images are captured from cotton plant fields by using a digital camera. Scaling, background removing and color conversion are done in the preprocessing phase. After preprocessing, the infected region is obtained by using K-means clustering algorithm. The infected region can be applied for detecting the diseases on cotton plant.

**Keywords :** clustering, feature extraction, image processing, segmentation.

## I. INTRODUCTION

Cotton is the most important crop for Indian economy. Cotton has most globally significance in oil and protein yielding as well as making fiber. India is the second largest producer of cotton in the world and produced 6.71 million metric tons of cotton. Automatic early disease detection of cotton plant may be useful for monitoring large fields of cotton crops and also prevent production losses. There are more than 80% diseases of cotton plant on its leaves. So it is easy to capture images of cotton leaves [15]. The Cotton plant leaf has diseases like bacterial, fungal, viral and due to insects. The major diseases on cotton plant leaf are leaf spot, Alternaria, Bacterial blight and leaf curl. Computer is an important device in the agriculture application for image processing. First healthy and infected images are captured through the camera. Image preprocessing is required for removing noise and smoothing of the images.

Image segmentation is an important technique for segmenting the images into smaller segments that are more meaningful. Images are segmented based on the similar properties of objects like texture, shape and color.

In this application, we segment and detect infected region on Bacterial Blight, Alternaria leaf spot & Cercospora leaf spot disease which are often found on the leaves of cotton plant.

**Revised Manuscript Received on July 25, 2020.**

**Khushal Khairnar**, Department of Computer Science & Engineering, Sandip University, Nashik, India.

**Sajidullah Khan**, Professor, Department of Computer Science & Engineering, Sandip University, Nashik, India.

## II. LITERATURE SURVEY

In this survey, we describe the methods, classification techniques, plant name & size of dataset used in previous work.

**Table 1: Literature Survey**

| Sr. No | Reference Paper & Year              | Classifier                             | Plant           | Dataset |
|--------|-------------------------------------|--|-----------------|---------|
| 1      | Elham Omrani et.al [2],2014         | K-mean clustering SVM                  | Apple           | 320     |
| 2      | Amar Dey, et al, [4],2016           | Otsu thresholding                      | Piper Betel     | 120     |
| 3      | H. Sarbol, et. al[5], 2016          | Classification Tree                    | Tomato          | 383     |
| 4      | Vijay singh, A.K. Mishra, [6], 2017 | Genetic Algorithm                      | -               | 60      |
| 5      | Ajay Kaul, et. al[7], 2018          | Radial Basis Function & Neural Network | Fungal Diseases | 277     |
| 6      | Bin Liu,et al,[8], 2018             | Deep Convolutional Neural Network      | Apple           | 13,689  |
| 7      | Serawork Walleign, et. al[9],2018   | Convolutional Neural Network           | Soybean         | 12,673  |
| 8      | Guiling Sun, et. al[10], 2018       | Multiple Linear Regression             | -               | -       |
| 9      | Shima Ramesh, et al[11], 2018       | Support Vector Machine                 | -               | -       |
| 10     | Sardogan, et. al[13], 2018          | Convolutional Neural Network           | Banana          | -       |
| 11     | Hong Zhang, et al[12], 2019         | Convolutional Neural Network           | -               | -       |

# Automatic Early Leaf Spot Disease Segmentation on Cotton Plant Leaf

Leaf spot segmentation and detection is critical and complicated task to implement. Many researchers have used various techniques for finding the infected region and different types of machine learning algorithms for detecting and classifying the diseases on plant leaves.

## III. PROPOSED SYSTEM

The proposed system for leaf spot segmentation using image processing consist of following steps:

1. Cotton plant leaf image acquisition
2. Image preprocessing of acquired images
3. Color based Segmentation
4. Edge Detection

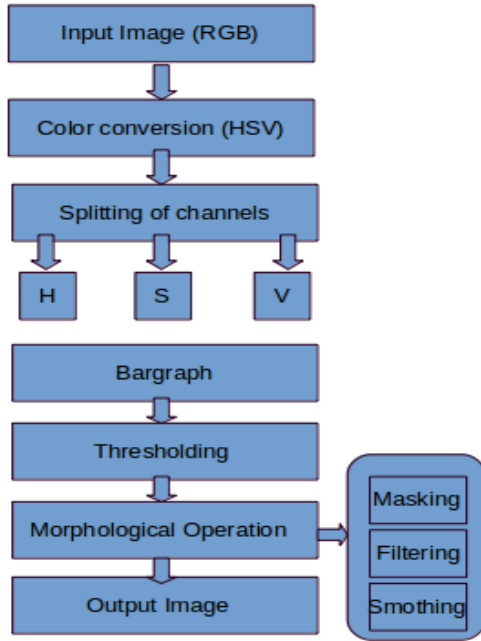


Fig 1: The flow diagram of proposed system

### A. Cotton plant leaf image acquisition:

Initially, the infected leaf images are captured through digi-cam with 300\*500 resolutions from the region of Maharashtra, India. By default all images are saved in the RGB color space model while capturing the images from a digital camera. Some of the images were downloaded from the PlantVillage database. The size of the dataset is 1070 leaf images of four classes including healthy images. The dataset is summarized per classes as followed:

Table 2: Types of Diseases

| Sr. No.      | Types of Diseases   | Number of Images |
|--------------|---------------------|------------------|
| 1            | Healthy Images      | 400              |
| 2            | Bacterial Blight    | 250              |
| 3            | Alernaria leaf spot | 200              |
| 4            | Cerespora leaf spot | 200              |
| <b>Total</b> |                     | <b>1070</b>      |

## B. Diseases on cotton plant leaf

- *Bacterial Blight (Angular leaf spot)*: It is bacterial disease, where more than 10% losses on cotton plant yielding are due to bacterial blight. It is affected by *Xanthomonas citri* bacteria. The red or brown border is shown on lesion of leaf. It is also infected on stem and petiole of cotton plant. Angular shape is progressed on lesions of upper leaf surface.



Fig. 2. Bacterial Blight on upper part of leaf



Fig. 3. Bacterial Blight on lesion of leaf

- *Alternaria Leaf Spot*: It is one the major disease which is observed on all cotton plantation countries in the world. This foliar disease is highly infected on cotton production and reduced quality and quantity. Brownish spot is shown on lower leaf surface and on boll of plant.



Fig. 4. Alternaria leaf spot

- *Cerespora leaf spot*: This is also foliar disease caused by *Cercospora gossypina*. Raddish spot is shown on middle of leaf. It is usually affected with stress such as drought and nutrient deficiency.



Fig. 5. Cerespora leaf spot

**C. Image preprocessing of acquired images:**

Image preprocessing operations such as resizing, color transformation, filtering, removing noise and background are required for finding meaningful contents from infected images. To find the infected region, It is necessary to convert RGB color space into the device-independent color space. In the RGB color space, the actual color is produced on the basis of tools used in the system. Whereas in a device dependent color space, the co-ordinates specify the color and produce the same color regardless of the device used to draw it. Therefore, convert RGB to HSV device dependent color space. In HSV color space, H is hue the color portion of the model. S is the saturation, describes the amount of grey in a particular color, V indicates value, works in a conjunction with saturation and describes the brightness or intensity of the color[2]. Python is used to implement all proposed algorithms in this work. The PyCharm Community 2019 3.5 is used for implementation.

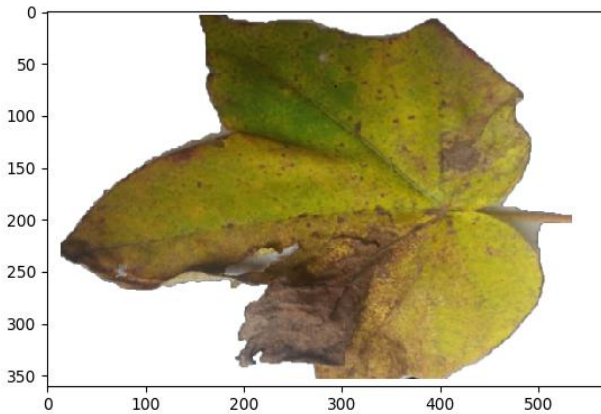


Fig. 6. Original RGB Image

After RGB to HSV color conversion shown in fig 7, each HSV image is observed that hue describes the clear perception of cotton infected leaf area also Hue is useful for masking the background and rest of the infected leaf image

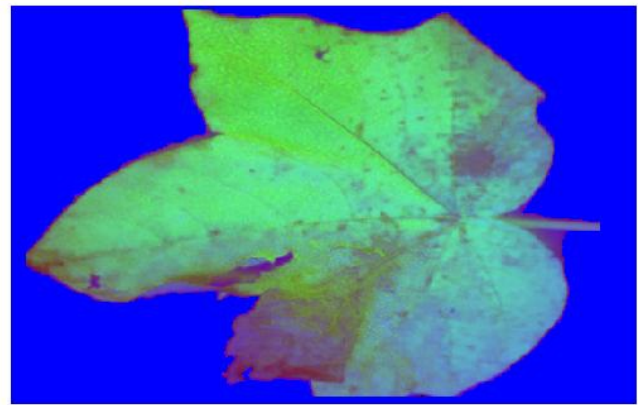


Fig. 7. HSV Image

**D. Color based Segmentation and Smoothing of the image:**

In the Image segmentation phase, it is the process of segmenting an image into multiple segments, often based on characteristics of the pixels in the image. Here, K-mean algorithm is used for segmentation. Color based segmentation is used to find infected regions that describe homogeneous colors in the infected leaf image correspond to separate clusters.

Cluster is a class of pixels based on similarities in color is shown in fig 9. Smoothing is used to reduce noise within HSV image.

Smoothing is performed by using MeanShift Filtering method to enhance and improve quality of image as shown in fig 8. K-Means clustering apply on smooth image to find infected region, it generates four color based cluster(k=4) as shown in bargraph. K –Mean clustering is used and based on the Euclidean distance formula (minimizing the sum of squares of distances between the objects and the corresponding centered class)

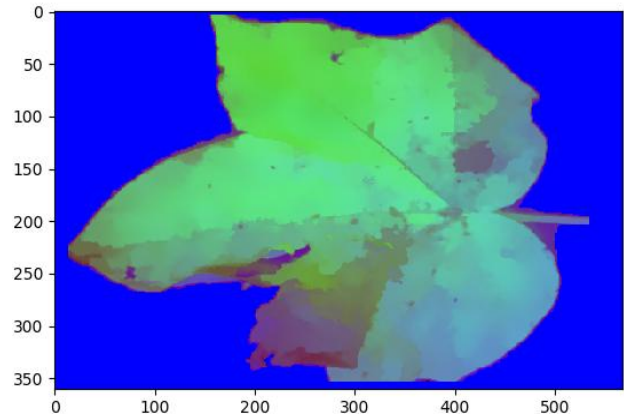


Fig. 8. Segmented Image



Infected region

Fig. 9. Bargraph



## E. Edge Detection

Edge Detection is an important technique for finding the boundaries of objects within the infected images. Edge feature is very important for every leaf image. Canny Edge detection algorithm is used for finding the boundaries in the form of tooth, smooth and wavy. It also finds the midrib alignment and vein pattern of infected leaf images.

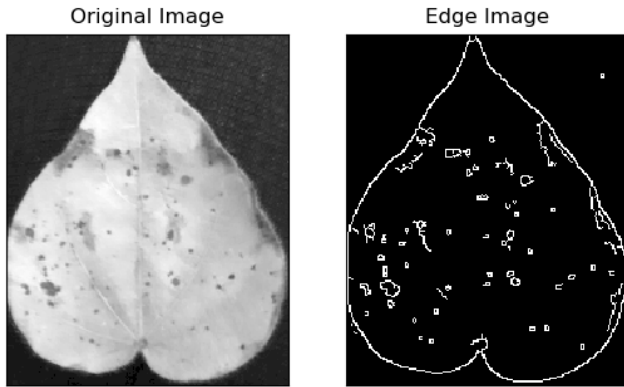


Fig. 10. Edge Detection

## IV. CONCLUSION

Farmers judge the diseases by their own experience and knowledge; it results in misidentification of disease. So automatic leaf spot disease segmentation and detection is an expert system which is helpful for finding the infected region through segmentation and edge detecting the diseases. It is reducing the losses due to misidentification of the diseases. Three major diseases like Bacterial Blight, Cercospora Leaf Spot, Alternaria Leaf Spot are automatically classified based on image preprocessing and K-mean clustering technique.

## ACKNOWLEDGMENT

We thank the Sandip University and Marathwada Mitra Mandal College of Engineering for supporting and providing the facilities for the study.

## REFERENCES

1. Khushal Khairnar, Nitin Goje, "Image Processing Based Approach for Diseases Detection and Diagnosis on Cotton Plant Leaf", Techno-Societal2018, 2020, Springer.
2. Elham Omrani, Benyamin Khoshnevisan, Shahabodhin Shamshirband, Hadi Saboohi, Nor Badrul Anuar, Mohd Hairul Nizam Md Nasir, "Potential of radial basis function-based support vector regression for apple disease detection", Measurement, vol.55, pg.no.512-519, Sept-2014.
3. Shital Bankar, Ajita Dube, Pranali Kadam, "Plant Disease Detection Techniques Using Canny Edge Detection and Color Histogram in Image Processing", Shital Bankar et al, (IJCSIT) International Journal of Computer Science and Information Technologies, Vol. 5 (2), 2014, 1165-1168.
4. Mr. Vijay Singh, A. K. Misra "Detection of Plant Leaf Diseases using Image Segmentation and Soft Computing Techniques", Elsevier, Information Processing In Agriculture 4 (41-49), 2017.
5. Mr. H. Sabrol and K. Satish, "Tomato Plant Disease Classification in Digital Images using Classification Tree", International Conference on Communication and Signal Processing, April 6-8, 2016 (IEEE), India
6. Mr. Amar Kumar Dey and M. R. Meshram, "Image Processing Based Leaf Rot Diseases, Detection of Betal Vine", Elsevier, International Conference on Computational Modeling and Security (CMS 2016).
7. Mr. Ajay Kaul, "Bacterial Foraging Optimization Based Radial Basis Function Neural Network (BRBFNN) for Identification and Classification of Plant Leaf Diseases: An Automatic Approach

8. Mr. Bin Liu, et. , "Identification of Apple Leaf Diseases Based on Deep Convolutional Neural Networks", www.mdpi.com/journal/symmetry, Symmetry 2018
9. Serarwork Walleign, et., "Soybean Plant Disease Identification Using Convolutional Neural Network", The Thirty-First International Florida Artificial Intelligence Research Society Conference, 2018
10. Mr. Guiling Sun, et. , "Plant Diseases Recognition Based on Image Processing Technology", Hindawi Journal of Electrical and Computer Engg., 7 pages, V.2018, Article ID:6070129
11. Ms. Shima Ramesh, et., "Plant Disease Detection Using Machine Learning", International Conference on Design Innovations for 3Cs Compute Communicate Control, 2018.
12. Mr.Sardogan, Melike and Tuncer, et, "Plant Leaf Disease Detection and Classification Based on CNN with LVQ Algorithm", 382-385. 10.1109/UBMK.2018.8566635, (2018).
13. Mr. Wan-jie Liang, et., "Rice Blast Disease Recognition Using a Deep Convolutional Neural Network", Scientific Reports, 9:2869 <https://doi.org/10.1038/s41598-019-38966-0>, (2019) <https://www.thehindubusinessline.com/economy/agribusiness/201718-cotton-production-seen-rising-1015-on-higheracreage-article9799154.ece>.
14. <http://cotcorp.gov.in/current-cotton.aspx?pageid=4>.
15. Khushal Khairnar, Rahul Dahade, "Disease Detection and Diagnosis on Plant using Image Processing- A review", IJCA, volume 108(13): 36-38, 2014.

## AUTHORS PROFILE



**Khushal Khairnar**, He completed his B.E. from Maharashtra Institute of Technology, Pune, 2013. He did his Masters of Engineering in Computer Engineering at Marathwada Mitra Mandal's College of Engineering, Pune, 2015. He is pursuing PhD in Computer Engineering & Science from Sandip University, Nashik. His areas of interest are Image Processing, Machine Learning and Data Structure and Algorithms.



**Sajidullah Khan** He works as Professor in School of Computer Science & Engineering department at Sandip University, Nashik. He has 20 years of teaching experience. His areas of interest are Machine Learning and Artificial Intelligence.

