

Down Regulating Colour and Toxicity of Effluent using Microaerophilic Bioreactor



Levin Anbu Gomez, Jesse Joel T, David Paul Raj R.S, Ramesh Siva R

ABSTRACT: Synthetic dye effluent is a major hazard to the surrounding environment. This hazardous condition is inevitable but the regulation of decolourizing and detoxifying could be done using reactors. In this study we have designed a microaerophilic bioreactor which incorporates a microbial consortium of *Pseudomonas stutzeri* and *Alcaligenes faecalis*. We had used the effluent from microbiological labs from our university and we treated them at the range from 20ppm to 60ppm of Crystal Violet dye. Standardization of dye removal was done primarily in small scale and later implemented in a large scale setup. Characterization studies for adsorbent was done using SEM analysis to get the nature of the pore size. In this study we chose 40ppm and 60ppm of dye effluent to be treated in lab scale setup with adsorbent and adsorbent along with microbial consortium and the treated effluent was analysed using UV-Visible spectrophotometry at 579nm and the efficiency of the percentage of removal was observed to be 99.7% and 99.1% for 40ppm with adsorbent and adsorbent with consortium respectively. Similarly for 60ppm it shows 99.8% and 99.4% removal respectively. The experiment done in small scale bioreactor with 60ppm shows 99.8% and 99.6% removal with adsorbent and adsorbent along with consortium and also the highest removal is achieved at 8pH. The adsorption isotherm was also studied.

Keywords: Crystal Violet, Decolourization, bacterial Consortium, SEM analysis, UV-Visible spectrophotometry.

I. INTRODUCTION

Dye is a coloured substance that has an affinity towards the substrate in which it is applied. Dyes are used in many industries such as textile, leather, paints, printing inks, coloration of plastics etc. The main application of dyes in medical field is for the staining process. Staining is an important technique that enhances contrast in the microscopic images.

Manuscript published on 30 September 2019

* Correspondence Author

Levin Anbu Gomez*, Karunya Institute Of Technology and Sciences, Assistant Professor , Department of Biotechnology, Karunya Nagar , Coimbatore-641114.

Jesse Joel T , Karunya Institute Of Technology and Sciences, Assistant Professor , Department of Biotechnology, Karunya Nagar , Coimbatore-641114.

David Paul Raj R.S, Karunya Institute Of Technology and Sciences, Assistant Professor , Department of Biotechnology, Karunya Nagar , Coimbatore-641114.

Ramesh Siva R, Karunya Institute Of Technology and Sciences, IV year B.Tech ,Department of Biotechnology, Karunya Nagar , Coimbatore-641114.

© The Authors. Published by Blue Eyes Intelligence Engineering and Sciences Publication (BEIESP). This is an [open access](https://creativecommons.org/licenses/by-nc-nd/4.0/) article under the CC-BY-NC-ND license <http://creativecommons.org/licenses/by-nc-nd/4.0/>

Dyes are also used in microbiology where it is applied to make microorganisms distinctly visible and to differentiate them. Crystal violet, malachite green, safranin are the important dyes that are used in the Gram's stain. Dyes have a systemic classification as natural or synthetic dye based on their chemical structure. Dye containing effluents are very problematic to the environment as it has high suspended solids and toxic compounds [1],[2].

Many bacteria, fungi, yeast have been used to decolourize and demineralize dyes [3],[4]. Nowadays bioreactors are configured and used to facilitate demineralization of dyes [5]. The objective of this study is to design a bioreactor which incorporates a microbial consortium of *Pseudomonas stutzeri* and *Alcaligenes faecalis* to decolourize and demineralize dyes.

II. MATERIAL AND METHODS

2.1 Design of the Downflow microaerophilic reactor

The design was done using autocad software and was outsourced for fabricating at Yuvaraj Engineering works, Coimbatore. Height of the Reactor is 90cm, Height of the bed is 28cm.

2.2 Activation of cultures from lyophilized form.

Lyophilized cultures of *Pseudomonas stutzeri* and *Alcaligenes faecalis* were bought from Microbial type culture collection and gene bank (MTCC) Chandigarh. These were activated by adding it into the Nutrient broth [10].

2.3 Sub culturing of microorganisms

After reviving of *Pseudomonas stutzeri* take 50ml of nutrient broth and add 2ml of activated *Pseudomonas stutzeri* into the nutrient broth. Now keep the broth in 25°C for 48 hours in shaker. Similarly add 2ml of activated *Alcaligenes faecalis* into 50ml of nutrient broth and keep the broth in 30°C for 48 hours [7].

2.4 Preparation of adsorbent

Sugarcane bagasse [8] was collected from a vendor in Karunya nagar Coimbatore. It was dried in sunlight and made into charcoal by flaming.

2.5 Preparation of Stock dye solution

Crystal violet dye powder was used to prepare the stock solution. 1 gram of crystal violet dye [9] powder was weighed and dissolved in 1000 ml of distilled water.

2.6 Preparation of dye with different concentration

To prepare 20 ppm concentration of dye, 2 ml of stock solution was made up to 100ml using distilled water. Similarly 40 ppm, 60 ppm, 80 ppm concentrations were prepared.

2.7 Experimental procedure

2.7.1 Effect of pH

The laboratory scale study was carried out in a burette. Dye with 40 ppm and 60 ppm with varying pH of 2, 4, 6, 8, 10 was prepared. The burette was filled with 1g of adsorbent and 10ml of dye was added into it and after half an hour the treated dye was collected. Then UV - visible spectrophotometric readings were taken before and after treatment of the dye. Similarly the same procedure was repeated but along with the adsorbent 10ml of broth was added into it; and then 10ml of dye was added. After 4 hrs the treated dye was collected and analysed using UV-visible spectrophotometry. Small scale study was carried out in the down flow microaerophilic reactor [6]. In this 5g of adsorbent, 800ml of broth and 1000ml of 60ppm concentration of dye were taken; and the treated dye was collected after 48 hrs and was analysed using UV-visible spectrophotometry at 579nm.

2.7.2 Effect of Contact time

The lab scale experiment: To a burette containing 1g of adsorbent, 20ml of dye was added and the samples were collected at 5 minutes interval till 30 minutes. The same procedure was repeated along with 10ml of broth and the samples were collected in 5 minutes interval of time. Then the collected treated dye samples were analyzed using UV-visible spectrophotometry at 579nm [11].

The small scale experiment was done using down flow microaerophilic reactor. In this 5g of adsorbent was taken and 1L of dye was added and the treated dye was collected for every 12hrs till 72 hrs. The same experiment was done along with adding 800ml of broth and similar step was repeated and the treated dye samples were analyzed using UV-visible spectrophotometry at 579nm [5].

2.7.3 Effect of varying the amount of adsorbent

The lab scale study was carried out in a burette taking the adsorbent in 1g, 2g, 3g. After taking the adsorbent in each burette, respectively 10ml of dye was added and the reaction was allowed to take place for half an hour. Then the treated dye was collected and the same procedure was repeated along with 10 ml of bacterial consortium and the treated dye was collected. Then these treated dye samples were analysed using UV-visible spectrophotometry at 579nm [8]. The small scale study was carried out in a down flow microaerophilic reactor ¹¹ and same procedure was carried out as lab scale but add 5g,10g,15g of adsorbent and 800ml of broth each and 1L of dye and the treated dye was collected after 2days and was analysed using UV-visible spectrophotometry at 579nm.

III. RESULTS AND DISCUSSION

As per Fig 1,2,3 The design was done using autocad software and the bioreactor [12] was fabricated at Yuvaraj engineering work Coimbatore and the front

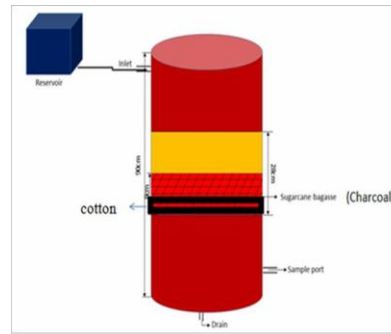


Fig 1: AutoCAD design of the bioreactor



Fig2: Frontview of the reactor



Fig-3 Filter bed front and inner view

view of the reactor [13] and filter bed, the inner view of the filter bed is shown along with the dimensions in Table 1.

Table 1: Dimensions of the bioreactor

Dimensions	Reactor	Filter bed
Height	90cm	28cm
Volume	59L	19L
Area	7174.84 cm ²	660.18 cm ²

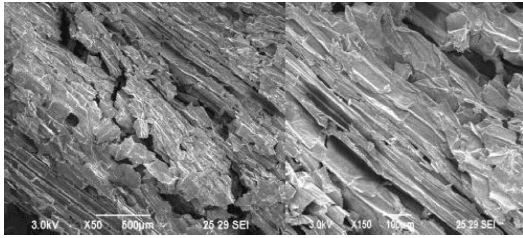
The commercially procured two microorganisms *Pseudomonas stutzeri* (MTCC no:101), *Alcaligenes faecalis* (MTCC no:2951) from MTCC Chandigarh and the subcultured microorganisms [14] [7] *Pseudomonas stutzeri*(MTCCno:101), *Alcaligenes faecalis* (MTCCno:2951) were kept in the nutrient broth at 25 and 35°C respectively for 48 hours in a shaker.



Fig4: Charcoal from sugarcane bagasse

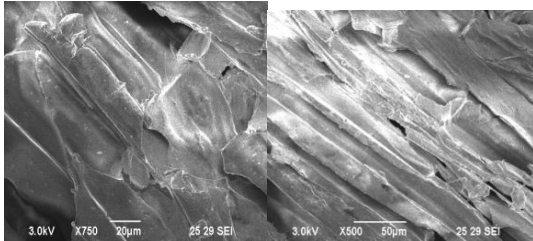
Fig 4 shows the charcoal prepared by flaming the sugarcane bagasse [8]

As per the Fig 5 The characteristic analysis of the sugarcane bagasse is done using SEM analysis at 50x, 150x, 500x, 750x and the size was found to be 500µm, 100µm, 50µm, 20µm respectively. Hence the increase in surface area provides more adsorbent capacity than that of sugarcane bagasse. The laboratory setup was done using a burette filled with layers of cotton, charcoal and microbial broth and dye with different concentrations [15].



@x50(500µm)

@x150(100µm)



@x500(50µm)

@ x750(20µm)

Fig 5: SEM analysis of sugarcane bagasse

Table 2 shows the OD value of the % removal of the dye and As the concentration increases the OD value also increases.

Table 2: OD value for % removal of dye.

Concentration (ppm)	OD (before treatment)	OD (after treatment with adsorbent)	% removal	rOD consortium	% removal after treatment with adsorbent
20	0.731	0.391	98.04	0.471	97.6
40	0.800	0.456	98.86	0.507	98.73
60	0.890	0.670	98.88	0.690	98.85
80	0.955	0.718	99.10	0.731	99.08

Laboratory scale results

In Fig 6 the graph shows the concentration with respect to the colorimetric reading as linear.

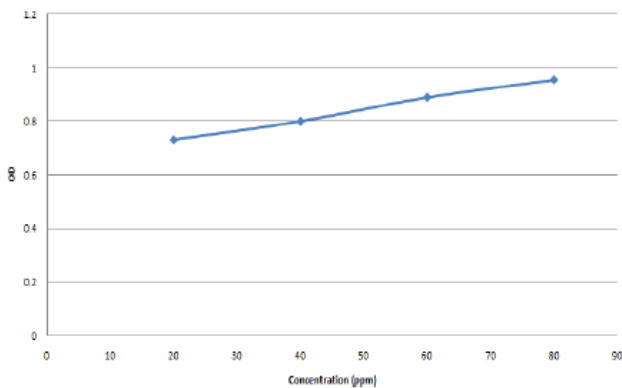


Figure 6: Graph for UV-Visible spectrophotometric analysis of crystal violet dye highest removal of dye is 99.1%.

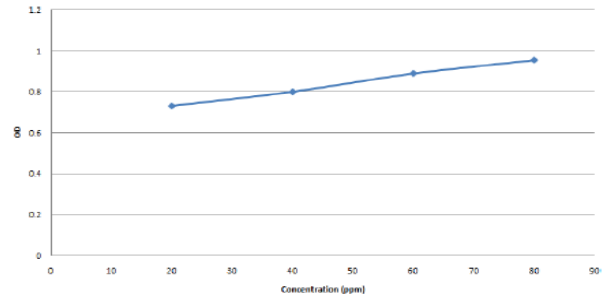
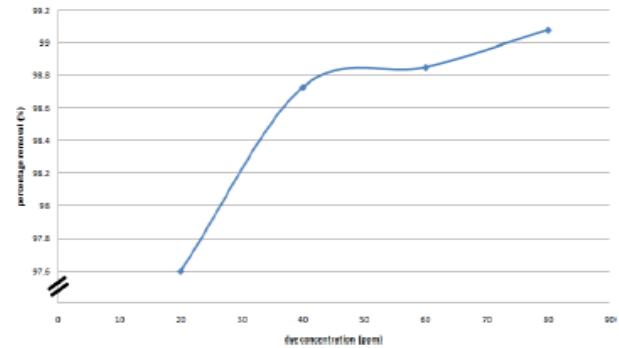


Figure 7 :Graph of the effect of dye concentration for % removal of dye after treatment with adsorbent



In Fig 8 the graph shows the % Removal of dye after treatment using adsorbent along with bacterial Consortium [5].The highest removal of dye is 99%.

Table 3 describes the effect of pH as an increase would proportionate to the % removal of dye as maximum for the highest pH.

PH	40ppm				
	2	4	6	8	10
% removal (With adsorbent)	99.4	99.54	99.67	99.79	99.70
% removal (With adsorbent and bacterial consortium)	98.25	98.81	98.84	99.17	98.87
PH	60ppm				
	2	4	6	8	10
% removal (With adsorbent)	99.5	99.62	99.75	99.85	99.7
% removal (With adsorbent and bacterial consortium)	98.9	98.99	99.3	99.4	99.2

Table 3: Effect of pH on % removal of dye (40ppm& 60ppm)

In Fig 9 the Graph shows the Effect of pH for % removal of dye (40ppm) after treatment with adsorbent and adsorbent along with consortium in lab scale and the result shows that the highest removal is seen at pH 8.

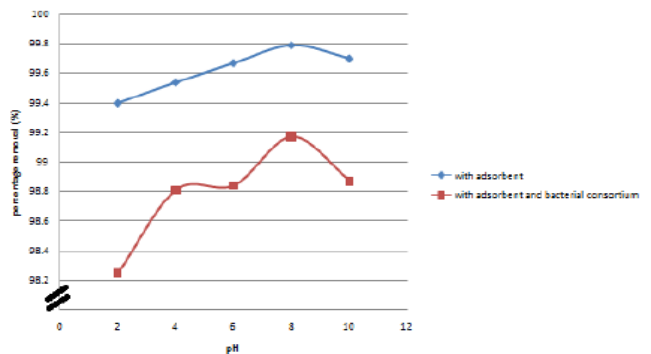


Fig 9: Graph for the Effect of pH for % removal of dye (40ppm) after treatment

Down Regulating Colour and Toxicity of Effluent using Microaerophilic Bioreactor

In Fig 10 the Graph shows the Effect of pH for % removal of dye (60ppm) after treatment with adsorbent and adsorbent along with consortium in lab scale and the result shows that the highest removal is seen at pH8.

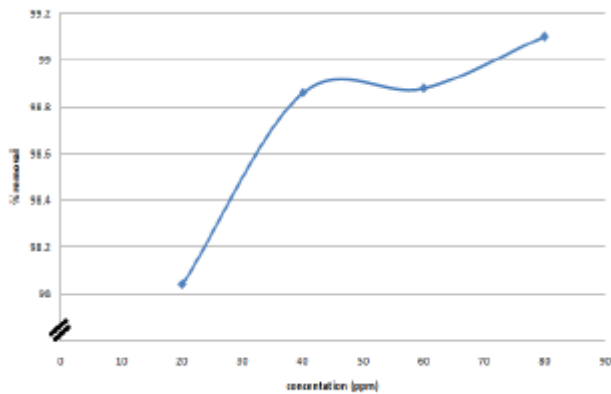


Fig 10: Graph for the Effect of pH for % removal of dye (60ppm) after treatment

Table 4 describes the contact time increases as the time increases.

Contact time (minutes)	5	10	15	20	25	30
40ppm						
% removal (with adsorbent)	99.35	99.41	99.5	99.64	99.79	99.79
% removal (with adsorbent and bacterial consortium)	98.5	98.8	99.10	99.15	99.22	99.22
60ppm						
% removal (with adsorbent)	99.55	99.61	99.68	99.81	99.85	99.85
% removal (with adsorbent and bacterial consortium)	98.9	99.13	99.2	99.3	99.45	99.45

In Fig 11 the Graph shows the Effect of contact time for % removal of dye (40ppm) after treatment with adsorbent and adsorbent along with consortium in lab scale [14] and the result shows that the removal of dye becomes constant at 25 minutes.

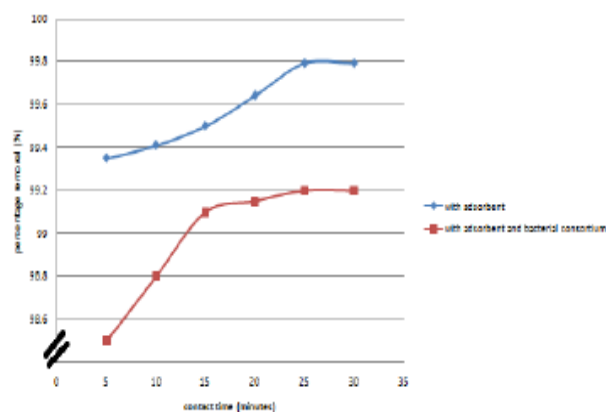


Figure 11: Graph for the Effect of contact time on % removal of dye (40ppm) after treatment

In Fig 12 the Graph shows the Effect of contact time for

% removal of dye (60ppm) after treatment with adsorbent and adsorbent along with consortium in lab scale and the result shows that the removal of dye becomes constant at 25 minutes.

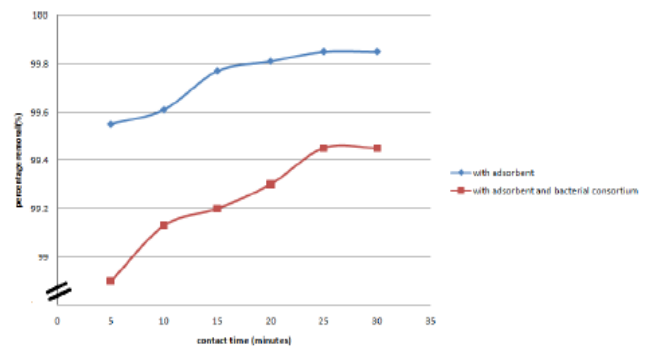


Fig 12: Graph for the Effect of contact time on % removal of dye (60ppm) after treatment
Table 5: Indicates the varying amounts of adsorbents increases the percentage removal of dye.

Amount of adsorbent (g)	1	2	3
40ppm			
% removal (With adsorbent)	99.37	99.55	99.7
% removal (With adsorbent and bacterial consortium)	98.26	99	99.17
60ppm			
% removal (With adsorbent)	99.7	99.78	99.84
% removal (With adsorbent and bacterial consortium)	99	99.17	99.41

In Fig. 13 the Graph shows the Effect of varying the amount of adsorbent for % removal of dye (40ppm) after treatment with adsorbent and adsorbent along with consortium in lab scale and it shows 99.72% removal of dye using only adsorbent and 99.1% removal of dye using adsorbent along with consortium.

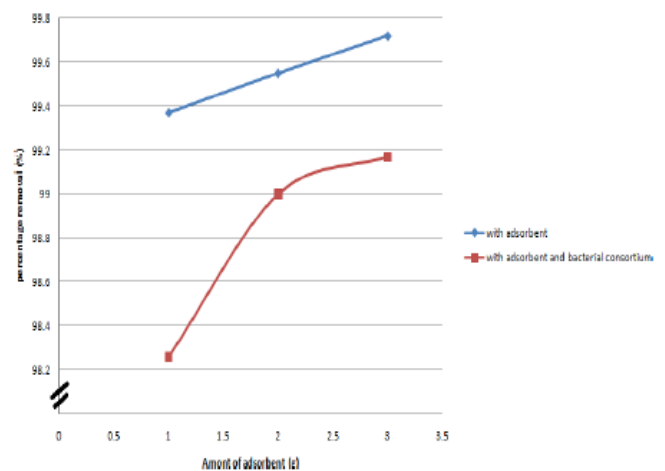


Figure 13: Effect of varying the amount of adsorbent for % removal of dye (40ppm) after treatment



In Fig. 14 the Graph shows the Effect of varying the amount of adsorbent for % removal of dye (60ppm) after treatment with adsorbent and adsorbent along with consortium in lab scale and it shows 99.84% removal of dye using only adsorbent and 99.4% removal of dye using adsorbent along with consortium.

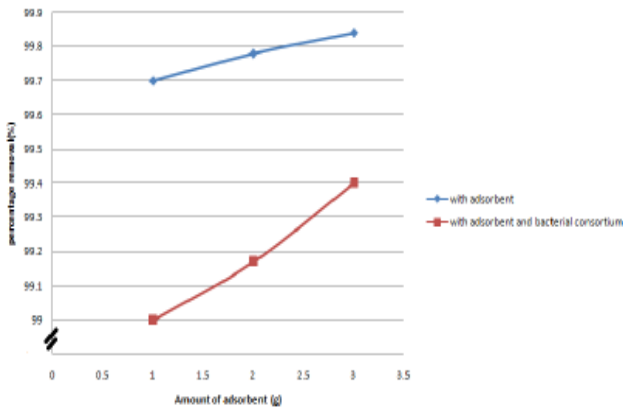


Figure 14: Effect of varying the amount of adsorbent for % removal of dye (60ppm) after treatment

Figure 15 and 16 show the packing of cotton and charcoal into the filter medium of the bioreactor [16].



Figure 15: Packing of filter bed with cotton

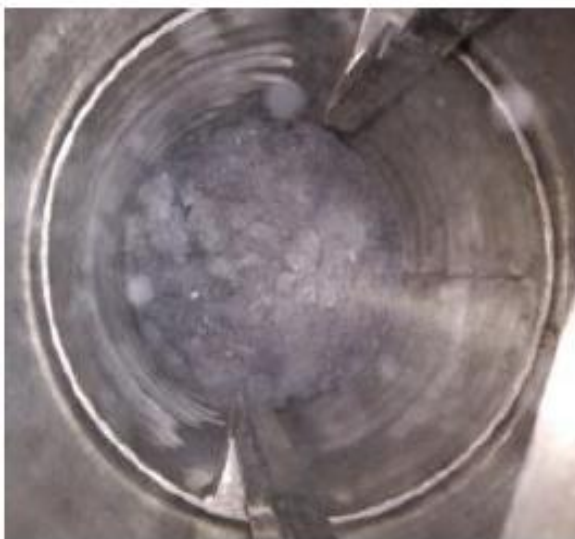


Figure 16: Packing of filter bed with charcoal

Small scale experimental results

Table 6 : Indicates the effect of pH at 60ppm on the percentage removal, with and without the adsorbent.

pH	2	4	6	8
% removal (With adsorbent)	99.5	99.6	99.8	99.88
% removal (With adsorbent and bacterial consortium)	99.1	99.17	99.36	99.6

In Fig. 17 the Graph shows the Effect of pH for % removal of dye (60ppm) after treatment with adsorbent and adsorbent along with consortium [17] in small scale bioreactor and the result shows that the highest removal is seen at pH 8.

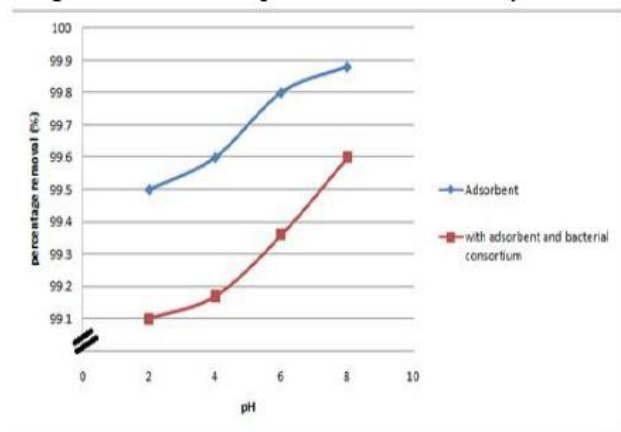


Figure 17: Effect of pH on % removal of dye after treatment with adsorbent and treatment with adsorbent and bacterial consortium

Table 7 indicates the effect of contact time on percentage removal as it increases proportionally as the contact time is increased.

Table 7: Effect of contact time on % removal of dye in the reactor (60ppm)

Contacttime (hours)	12	24	36	48	60	72
% removal (With adsorbent)	99.58	99.62	99.68	99.85	99.87	99.87
% removal (With adsorbent and bacterial consortium)	99.4	99.5	99.55	99.6	99.64	99.64

Down Regulating Colour and Toxicity of Effluent using Microaerophilic Bioreactor

Table 8 indicates the percentage removal in the reactor, which shows a linearity with and a decrease without the adsorbent.

Table 8: Effect of amount of adsorbent on % removal of dye in the reactor (60ppm)

Amount of adsorbent (g)	5	10	15
% removal (With adsorbent)	99.7	99.75	99.86
% removal (With adsorbent and bacterial consortium)	99.1	99.44	99.63

In Fig 18 the Graph shows the Effect of contact time for % removal of dye (60ppm) [12] after treatment with adsorbent and adsorbent along with consortium in small scale bioreactor and the result shows that the removal of dye becomes constant at 48 hours.

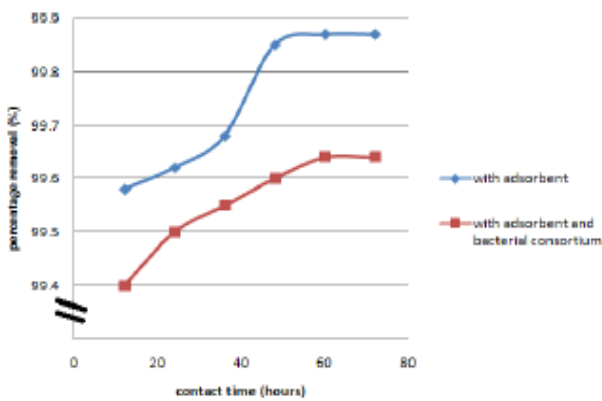


Figure 18: Effect of contact time on % removal of dye after treatment with adsorbent and treatment with adsorbent and bacterial consortium

In Fig 19 The Graph shows the Effect of varying the amount of adsorbent for % removal of dye (60ppm) after treatment with adsorbent and adsorbent along with consortium in small scale bioreactor and it shows 99.86% removal of dye using only adsorbent and 99.63% removal of dye using adsorbent along with consortium at the amount of 15g of adsorbent.

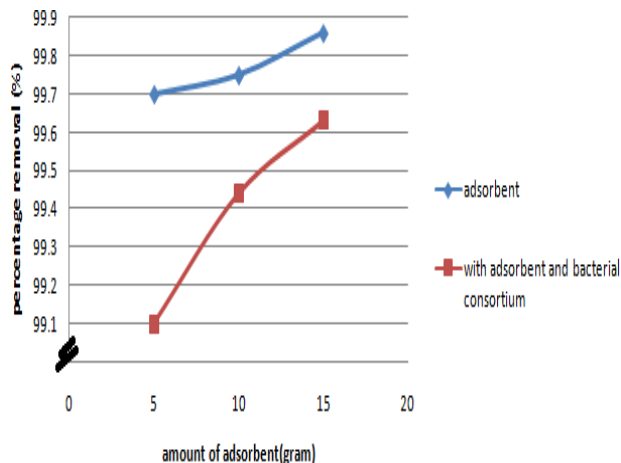


Figure 19: Effect of varying the amount of adsorbent on % removal of dye after treatment with adsorbent and

treatment with adsorbent and bacterial consortium Equilibrium models for the adsorption of crystal violet dye

Figures 20 and 21: Adsorption isotherms show the relation between the amounts of metal adsorbed per unit weight of adsorbate remaining in a test medium at equilibrium [18]. The capacity of charcoal was evaluated using Langmuir and Freundlich isotherm equations [15]. The Langmuir equation is used to estimate the maximum adsorption capacity corresponding to complete monolayer coverage on the adsorbent surface and is expressed by

$$1/q_{eq} = (1/Q_{max}b) + (1/ceq)$$

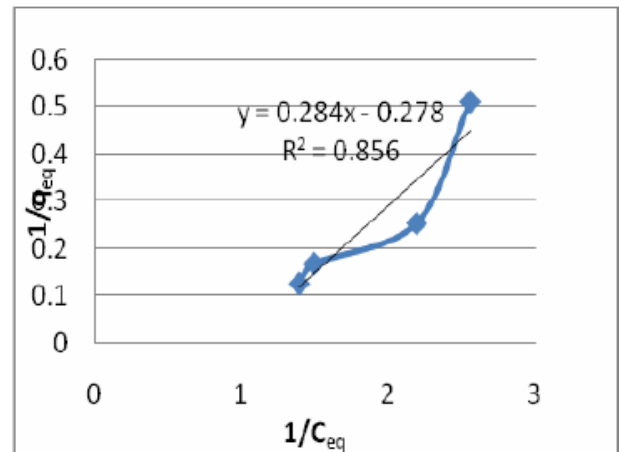


Figure 20: Langmuir Isotherm plot for dye adsorption into charcoal.

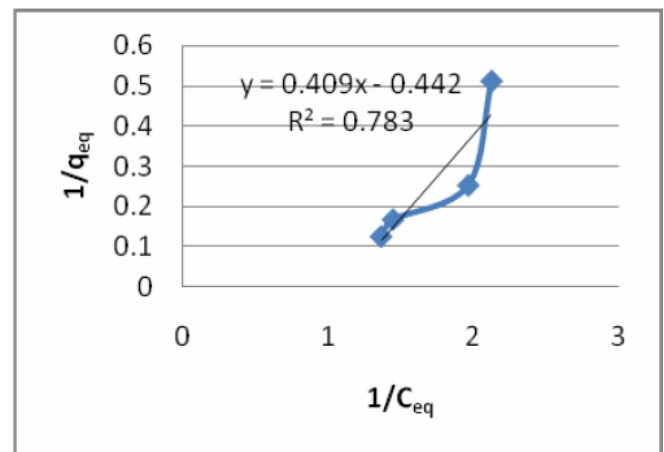


Figure 21: Langmuir Isotherm plot for dye adsorption into charcoal with bacterial consortium
Where, q_{eq} is the amount adsorbed at equilibrium (mg/g), c_{eq} is the equilibrium concentration of dye (mg/L) and b is a constant related to the energy of adsorption

Table 9 indicates the Kinetics of the isotherm , Langmuir and the constants indicates the maximum removal with the adsorbent.

	Slope	intercept	Q _{max} (mg/g)	b (L/mg)	R ²
With adsorbent	0.284	0.278	0.978	3.597	0.856
With adsorbent and bacterial	0.409	0.442	1.080	2.262	0.783

Figures 22 and 23: The Freudlich model is an empirical equation used to estimate the adsorption intensity of the sorbent towards the adsorbate and is given by

$$\ln q_{eq} = \ln k_f + (1/n) \ln c_{eq}$$

where, q_{eq} is the amount adsorbed at equilibrium (mg/g), c_{eq} is the equilibrium concentration of dye (mg/L), n is indicative of bond energies between metal ion and the adsorbent and k is related to bond strength.

The R² value is found to be 0.911, 0.869 respectively.

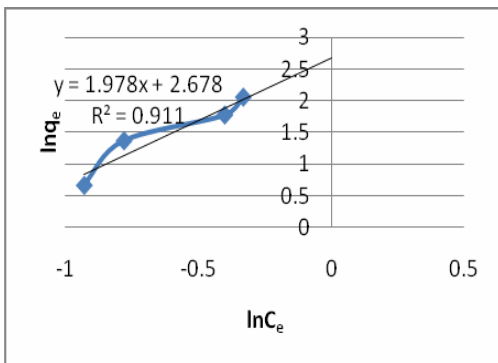


Figure 22: Freundlich Isotherm plot for dye adsorption into charcoal

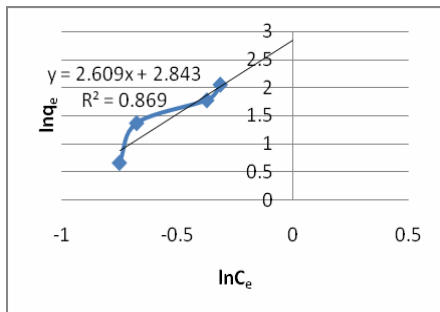


Figure 23: Freundlich Isotherm plot for dye adsorption into charcoal with bacterial consortium

Table 11 indicates the similar of Langmuir, the Freundlich isotherm constants with and without the adsorbents.

Table 11: Freundlich isotherm constants.

	K _f (mg/g)	R ²
With adsorbent	14.55	0.911
With adsorbent and bacterial consortium	17.16	0.869

IV. CONCLUSION

The down regulation of colour and toxicity of crystal violet dye was carried out in a down flow microaerophilic bioreactor. The bioreactor was designed using an AutoCAD software and was fabricated. Before treating the dye in the bioreactor, lab scale study was done using burette. Microbial consortium of *Pseudomonas stutzeri* and *Alcaligenes faecalis* was commercially procured and was activated using nutrient broth and was sub cultured. The adsorbent used is charcoal from sugarcane bagasse and the characterization of adsorbent was done using Scanning electron microscope. We had used the effluent from microbiological labs from our university and we treated them at the range from 20ppm to 60ppm of Crystal Violet dye. Standardization of dye removal was done primarily in small scale and later implemented in a large scale setup. In this study we chose 40ppm and 60ppm of dye effluent to be treated in lab scale setup with adsorbent and adsorbent along with microbial consortium and the treated effluent was analyzed using UV-Visible spectrophotometry at 579nm and the efficiency of the percentage of removal was observed to be 99.7% and 99.1% for 40ppm with adsorbent and adsorbent with consortium respectively. Similarly for 60ppm it shows 99.8% and 99.4% removal respectively. The experiment done in small scale bioreactor with 60ppm shows 99.8% and 99.6% removal with adsorbent and adsorbent along with consortium and also the highest removal is achieved at 8pH. The adsorption isotherm was also studied and the R² value for dye removal using adsorbent in small scale bioreactor was found to be 0.911. The cost of the bioreactor is Rs.10000 and the reactor can be used for further studies on waste water treatment and it has been dedicated to the Bioprocess lab of the Biotechnology department, Karunya Institute of Technology and Sciences. The adsorbent, culture, cotton used in the reactor can be reused twice.

ACKNOWLEDGEMENT

We acknowledge the Dept. of Biotechnology, Karunya Institute of Technology and Sciences, Coimbatore, India for providing the laboratory facilities and chemicals used in the study.

A special thanks to Mr.Moses and Mr.Jeyakumar for fabricating the reactor used in the study.

REFERENCES

1. Spagni A, Casu S, Grilli S, "Decolourisation of textile wastewater in a submerged anaerobic membrane bioreactor" *Bioresource Technology*, 2012 ;117 pp 180–185.
2. Chen Han, Sheng Chang, Qingbin Guo, Youngseck Hong, and Ping Wu, "Brewery wastewater treatment using an anaerobic membrane bioreactor", *Biochemical Engineering Journal*, 2016; 105, pp 321–331.
3. Gunasekar V, Gowdhaman D, Ponnusami V, "Biodegradation Of Reactive Red M5B Dye Using *Bacillus subtilis*", *International Journal of ChemTech Research*, 2013 ; 5(1), pp 131-135.
4. Moturi and Singaracharya, "Decolourisation of crystal violet and malachite green by fungi", *Science World Journa.* 2009 ; 4(4), pp 28-33.
5. Parshetti G, Kalme S, Saratale G, Govindwar S, "Biodegradation of Malachite Green by *Kocuriarosea* MTCC 153", *Actachimica Slovenic.*, 2006 ; 53, pp 492-498.
6. Balapure K, Bhatt N, Madamwar D, "Mineralization of reactive azo dyes present in simulated textile waste water using down flow microaerophilic fixed film bioreactor", *BioresourceTechnology*, 2015;175, pp 1-7.
7. Saranraj J, Sivasakthivelan, "Prevalence of Bacterial Isolates in Textile Dye Effluent and Analysis of its Dye Degrading Efficiency", *Middle-East Journal of Scientific Research*, 2014 ; 21(5), pp 721-725.
8. Ibrahim S, "Formaldehyde biodegradation using an immobilized bed aerobic bioreactor with sugarcane bagasse as a support", *Scientia Iranica*, 2011 ; C 18 (6), pp 1372–1376.
9. Rania MA, Abedin, "Decolourisation and biodegradation of crystal violet and malachite green by *Fusarium solanai* (Martius) saccardo. A comparative study on biosorption of dyes by the dead fungal biomass", *American-Eurasian journal of Botany*, 2008 ;1(2), pp 17-31.
10. Balapure K, Jain K, Sananda D, Chattaraj S, Bhatt NS, Madamwar D, "Co-metabolic degradation of diazo dye—Reactive blue 160 by enriched mixed cultures BDN", *Journal of Hazardous Materials*, 2014; 279, pp 85–95.
11. Konsowa HB, Abd El-Rahman MA, Moustafa, "Removal of azo dye acid orange 7 using aerobic membrane bioreactor", *Alexandria Engineering Journal*, . 2011 ; 50, pp 117–125
12. Madhu GM, Ashly Thomas, Deepak S, Preetham HS, Rajanandam KS., "Escalation of degradation of malachite green and Methyl violet using hydrodynamic cavitations using different orifice geometry", *International journal of environmental science*, 2014; 5(3), pp 644-651.
13. Mahmoud A, El-Sheikh, "Biological tannery wastewater treatment using two stage UASB reactors", *Desalination*, 2011; 276, pp 253–259.
14. Maulin P, Patel KA, Nair SS and Darji A M, "Microbial degradation of Textile Dye (Remazol Black B) by *Bacillus* spp. ETL-2012", *Journal of Bioremediation and Biodegradation*, 2013 ; 4(2), pp 1-5.
15. Yanyan Yin, Chen Li, Chengwen Song, Ping Tao, Menghan Sun, Zonglin Pan, Tonghua Wang, Mihua Shao, "The design of coal-based carbon membrane coupled with the electric field and its application on the treatment of malachite green (MG) aqueous solution", *Colloids and Surfaces A: Physicochemical Engineering Aspects*, 2016 , 506, pp 629–636.
16. Keerthi, Suganthi V, Mahalakshmi M, Balasubramanian N, "Development of hybrid membrane bioreactor for tannery effluent treatment", *Desalination*, 2013; 309, pp 231–236.
17. Pandey A K, Dubey V, "Biodegradation of Azo Dye Reactive Red BL by *Alcaligenes* sp. AA09", *International Journal of Engineering and Science*, 2012;1(12), pp 54-60.
18. Tomei MC, Annesini MC, Daugulis AJ, "2,4-dichlorophenol removal in a solid liquid two phase partition bioreactor (TPPB): kinetics of absorption, desorption and biodegradation", *New Biotechnology*, 2012; 30(1), pp 44-50

AUTHOR PROFILE:



Dr. Levin Anbu Gomez, Ph.D An Assistant Professor with 12 years of experience in teaching and 8 years of research proficiency. Major part of research was on Immunotechnology. As an engineered graduate in Biotechnology focused also on Bioprocess Engineering, Downstream Processing and Nano Biotechnology. Avidly taking part in Conferences, Seminars, Workshops and Hands on training. Had also organized workshops and national level conferences to make science abound to the younger generation. As

part of my Ph.D work I focused on raising chicken antibodies against Rabies Viral Antigen which could be used for passive immunization. I have 9 publications till date in both peer reviewed National and International Journals.



Dr. Jesse Joel T, Ph.D Jesse Joel T. teaches Undergrad and Postgrad students subjects like Microbiology, Cell Biology, Molecular Biology, Biochemistry, Biomaterials and Artificial Organs, Taxonomy and Phylogeny etc., for past 7 years. During his professional career of 14 years, he has received 2 Awards of Excellence such as: Best Paper and Best Lecture. A total of 7 peer-reviewed publications of them 4 are in Scopus. His work is channelized in the fields of Basic Microbiology and Oral Pathology. Currently Dr. Joel is working in the field of Nano science using Green Synthesis of Nanoparticles from Plant Extracts, Probiotics and Oral Bioformulations. Cocurricular activities - Editor in a couple of International peer-reviewed journals. Editor in Apple Academy Press, CRC London Publishers book entitled, "The Therapeutic Properties of Medicinal Plants – Health-Rejuvenating Bioactive Compounds of Native Flora" in Oct 2019. Readers may contact him at: jessejoel@gmail.com, jessejoel@karunya.edu



Dr. R. S. David Paul Raj, Ph.D Dr. R. S. David Paul Raj completed his PhD from University of Madras, Chennai in 2003 with specialization in Molecular Plant Pathology and Plant Breeding. He has 15 years of teaching and research experience in the field of biotechnology. He has a credit of a patent entitled "Enhanced production of anti-snake venom compound (Taraxerol) from suspension cultures systems of *euphorbia hirta* l" Patent No. 201941017991 A. He has received the best teacher award and several best research presentations award. He holds National and International publications in peer reviewed journal with a cumulative H index of 5. He has developed two bioformulations for plant growth and biocontrol of root rot pathogens. He has organized several national level conferences, Symposium and workshops in the field of biotechnology. He is currently working as Assistant Professor (SG) in Department of Biotechnology, Karunya Institute of Technology and Sciences, Coimbatore, Tamilnadu, India.



Mr. Ramesh Siva R, IV year Biotechnology
Myself Ramesh Siva R, an Engineer student specializing in the field of Biotechnology. Having a right direction towards the future I work and train myself in various Biotechnological aspects for application of those scenarios in the future. Having published a paper on "Novel Method to Prepare Activated Carbon Nanomaterials from Defunct Eucalyptus Leaves" *American Journal of Chemistry and Material Sciences* 2018, has also involved in various presentations in several International and National conferences, gaining recognition for best presentation in the International conference RAV'19 held at KITS on the topic CATCH. Completed my Internship at SBI, ICAR on Basic Molecular Biological Techniques