

Experimental and CFD Analysis of GW70 based Cu Nanofluids in a Parallel Flow Heat Exchanger



M. L.R. Chaitanya Lahari, P.H.V. Sessa Talpa Sai P., K.V. Sharma, K.S. Narayanaswamy, Haseena Bee, S. Devaraj

Abstract: The Nusselt number, overall heat transfer, and convective heat transfer coefficients of glycerol-water-based Cu nanofluids flowing in a parallel flow double pipe heat exchanger are estimated using CFD analysis. Single-phase fluid approach technique is used in the analysis. Ansys 19.0 workbench was used to create the heat exchanger model. Heat transfer tests with nanofluids at three flow rates ($680 < Re < 1900$) are carried out in a laminar developing flow zone. For testing, a 500 mm long concentric double pipe heat exchanger with tube dimensions of $ID=10.2$ mm, $OD=12.7$ mm, and annulus dimensions of $ID=17.0$ mm, $OD=19.5$ mm is employed. Copper is utilized for the tube and annulus material. This study employed three-particle volume concentrations of 0.2 percent, 0.6 percent, and 1.0 percent. The mass flow rates of hot water in the tube are 0.2, 0.017, and 0.0085 kg/s, while the mass flow rates of nanofluids in the annulus are 0.03, 0.0255, and 0.017 kg/s. The average temperature of nanofluids is 36°C , whereas hot water is 58°C . In comparison to base liquid, the overall heat transfer coefficient and convective HTC of 1.0 percent copper nanofluids at 0.03 kg/s are raised by 26.2 and 46.2 percent, respectively. The experimental findings are compared to CFD values, and they are in close agreement.

Keywords: Glycerol-water mixture, CFD analysis, double pipe heat exchanger, convective heat transfer, overall heat transfer, Cu nanofluids.

I. INTRODUCTION

The thermo-physical parameters of fluid heating or cooling are critical for the development of energy-efficient heat transfer equipment. Meanwhile, in all heat transfer (HT) processes, the fluid's thermal conductivity (TC) is one of the most significant qualities to consider while developing and operating the operations. Nanofluids (NF) are designed colloids made up of a base fluid with nanoparticles (NP) ranging in size from 1 to 100 nanometers.

Manuscript received on October 04, 2021.

Revised Manuscript received on October 18, 2021.

Manuscript published on November 30, 2021.

Corresponding author

M.L.R. Chaitanya Lahari*, Research Scholar, School of Mechanical Engineering, Reva University, Bangalore, India.

P.H.V. Sessa Talpa Sai, Professor & Director-R&D, Department of Mechanical Engineering, Malla Reddy College of Engineering and Technology, Hyderabad, India.

K.V. Sharma, Emeritus Professor, Centre for Energy Studies, Jawaharlal Nehru Technological University, Hyderabad.

K.S. Narayanaswamy, Professor & Director, School of Mechanical Engineering, Reva University, Bangalore, India.

P. Haseena Bee, Research Scholar, School of Mechanical Engineering, Reva University, Bangalore, India.

S. Devaraj, Professor, School of Mechanical Engineering, Reva University, Bangalore, India.

© The Authors. Published by Blue Eyes Intelligence Engineering and Sciences Publication (BEIESP). This is an open access article under the CC BY-NC-ND license (<http://creativecommons.org/licenses/by-nc-nd/4.0/>)

Many studies have discovered that nanofluids have better thermal conductivity than basic fluids. With increasing particle concentration (ϕ), temperature (T), particle size, dispersion, and stability, its value rises. However, additional parameters such as density (ρ), viscosity (μ), and specific heat (C_p) are likely to play a role in the enhanced convective heat transfer coefficient (HTC) of NF's. In comparison to single-phase fluids, NF have a high TC and HTC [1-4].

Because of their higher thermal conductivity, NFs have lately been used in lieu of normal fluids. **Abu Nada** [5] used Cu, Ag, Al_2O_3 , CuO, and TiO_2 nanofluid in laminar NF flow over a backward-facing step, with volume fractions (ϕ) ranging from 0.05 to 0.2 and Reynolds numbers ranging from 200 to 600. According to the data, the Nusselt number climbed as the ' ϕ ' and Re numbers increased. Using a computer model, **Kherbeet et al.** [6] studied HT and laminar NF flow across a microscale backward-facing step. The NP types were Al_2O_3 , CuO, SiO_2 , and ZnO, with volume fractions ranging from 1% to 4% and an expansion ratio of 2. The Re numbers varied from 0.05 to 0.5, and the NP types were Al_2O_3 , CuO, SiO_2 , and ZnO, with volume fractions ranging from 1% to 4% and an expansion ratio of 2. The researchers discovered that when Re number and ' ϕ ' increase, Nusselt number increases, with SiO_2 having the highest Nusselt number value.

For NF flow and heat transmission across a backward-facing step, **Hussein et al.** [7] employed numerical analysis. When compared to pure water, the maximal HT improvement was about 26 percent and 36 percent for turbulent and laminar ranges. **Pak and Cho** [8] investigated 30nm alumina oxide and titanium oxide nanoparticles and found that Nu is 30% higher than BL and greater to the Dittus Boelter (DB) equation predicts. **Li and Xuan** [9] employed Copper (100nm) nanofluids in their experiment to investigate the increase of HT under turbulent flow. They observed that the average rise in Nu is far larger than the DB equation predicts. **Heris et al** [10] used Al_2O_3 (20nm) nanofluids suspended in water to study convective HTC in laminar flow. In his investigation, Nu was shown to be greater than pure water.

Kolade et al [11] used Al_2O_3 (40nm & 50nm) nanofluids to determine the impact of HTC and reported Nu number enhancement over BL. **Duangthongsuk et al** [12] showed that nanofluids exhibit a significant increase in HTC over the base fluid using TiO_2 nanoparticles of 21nm size in a turbulent regime.

Water-based Al_2O_3 (50nm) and ZrO_2 (50nm) nanofluids were employed by Rea et al [13] to exhibit a 27 percent increase over water. In a rectangular microchannel, Jung et al [14] conducted an experiment using Al_2O_3 NP with an average diameter of 170nm. As the Re grew, the usage of nanofluids over base fluid resulted in a significant increase in Nu. Lee and Choi [15] explored HTC improvement of 2.0 percent Cu nanofluids made of water and found a 100 percent increase in Nu number as compared to water. The HTC of glycerol-water (30:70 by volume) based, referred to as GW70 - Cu NF flow for laminar range in double pipe heat exchanger (DPHE) have not been investigated experimentally or numerically yet, according to the literature review; thus, the uniqueness of this work is to experimentally and numerically determine the effects of ‘ ϕ ’ of NP’s, Re numbers on the laminar HTC.

II. GEOMETRY, MODELLING AND BOUNDARY CONDITIONS

The schematic representation of parallel flow in a DPHE is shown in Fig. 1. The study is carried out on double pipe heat exchanger with an ID of 10.2 mm and an OD of 12.5 mm; an annular pipe with an ID of 17.0 mm and an OD of 19.5 mm; and a length of 500 mm. The tube is filled with hot water, and the annulus is filled with nanofluids. Hot water flow rates of 0.2, 0.017, and 0.0085 kg/s are maintained, whereas nanofluid flow rates are 0.03, 0.0255, and 0.017 kg/s. The average temperature of nanofluids and hot water is 36 degrees Celsius and 58 degrees Celsius, respectively. To reduce heat loss, the annulus pipe's outside wall is insulated with asbestos rope.

2.1 Meshing of Geometry

The geometry was created using the structured meshing approach in Ansys Workbench. Quadratic elements with nodes up to 200000 in the range of 25000 to 36500 are considered for analysis. For analysis, a standard viscous and laminar model is used. Fig. 2 depicts the DPHE geometry model, whereas Fig. 3 depicts the meshed model.

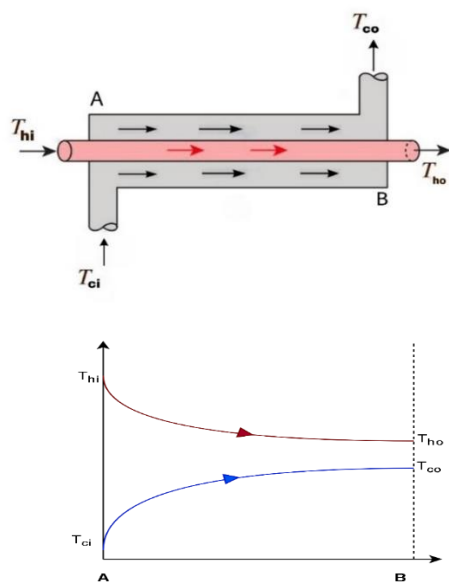


Fig. 1 Schematic representation of parallel flow arrangement in the DPHE

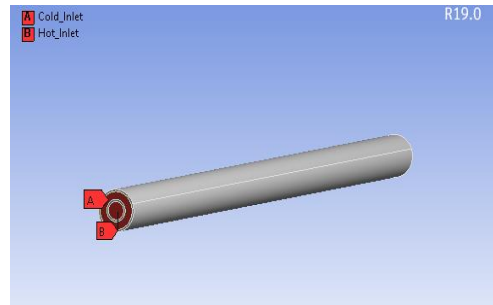


Fig. 2 Geometry model of DPHE with cold and hot fluid inlets

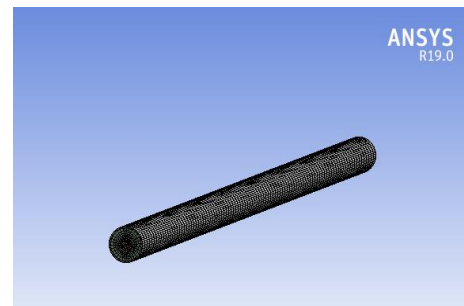


Fig. 3 Meshed model of double pipe heat exchanger

2.2 Grid Independence Test

The phrase "grid independence" refers to the process of improving outcomes by doing computations with lower and smaller cell sizes. Grid Independence refers to the ability of computation to arrive at the right conclusion, resulting in a smaller mesh. The standard CFD method is to start with a coarse mesh and progressively improve it until the changes in the data measured are less than a pre-determined acceptable error. There are two issues with this approach. For starters, various CFD tools may make it impossible to get even a single coarse mesh, which might cause issues. Second, improving a mesh by a factor of two or more might take longer. This is blatantly objectionable for software designed to be used as a design tool for engineers working under tight production constraints. Furthermore, the other difficulties have contributed greatly to the impression of CFD as a difficult, time-consuming, and so expensive approach. Finally, grid independence tests were performed in Ansys-Fluent at three flow rates of hot water and cold water, by reducing and increasing the size of the components. For further simulation, the final mesh pieces of 34400 and 175375 nodes were employed.

2.3 Physical models

For single-phase laminar flow in a circular pipe channel, the standard viscous model is utilized. The conventional viscous laminar model is employed for nanofluids with a Reynolds number range of $680 < \text{Re} < 1900$. Wherever the flow is turbulent, the usual $k-\epsilon$ model is utilized for hot water.

2.4 material properties

Thermophysical characteristics of nanofluids as determined by the experiments. Data books are used to determine the properties of hot water.

The data books are used to determine the material parameters of tube and annulus materials, such as copper. All of the parameters are considered in the calculation of heat transfer coefficients at the experimental mean temperatures. Thermophysical parameters of base liquids and nanofluids are taken from the experimental data of **Lahari et al. [16]**.

2.5 Governing Equations

Simulating steady-state conditions was accomplished by solving the mass, momentum, and energy equations for a single-phase fluid, which are written as:

$$\text{Continuity equation: } \partial\rho/\partial t + \partial/\partial X (\rho u_x) + \partial/\partial r (\rho u_r) + (\rho u_r)/r = 0 \quad (1)$$

$$\text{Momentum equation: } (\partial(\rho u_x)/\partial t + (\rho(u_x u_x))) = \rho g - \nabla P + \nabla \cdot (\tau) \quad (2)$$

$$\text{Energy equation: } (\partial(\rho E)/\partial t + \nabla(u(\rho E + P))) = \nabla \cdot (k_{eff} \nabla T) \quad (3)$$

Where ρ is the density, u is the velocity, P is the pressure, τ is the viscous stress, E is the energy and k_{eff} is the effective TC. The altered/changed velocity fields describe the flow conditions. These changes mix conveyed variables like velocity, energy, and species concentration, causing them to vary as well. As a result, changes may happen at a microscopic size and with a high frequency, and they're computationally rich enough to be mimicked directly in engineering calculations. Instead, the exact governing equations may be time-averaged or ensemble-averaged, resulting in a modified set of equations with additional unknown variables that must be determined using turbulence models.

2.6 Boundary Conditions

At the channel inlet, a velocity inlet, uniform mass flow inlets, and a constant inlet temperature were given. The pressure was indicated at the exit. The flow rates for hot water in the tube are 0.2, 0.017, and 0.0085 kg/s, while for nanofluids in the annulus are 0.03, 0.0255, and 0.017 kg/s. For hot water, a temperature of 58°C is used, while for nanofluids, a temperature of 36°C is used. The study considers the constant heat flow boundary condition. For analysis, experimental entrance temperatures are used, and output temperatures are noted and compared to empirical data. The overall heat transfer coefficient (U_o) and HTC (h_{nf}) are also noted and compared to empirical data.

2.7 Method Of Solution

For the CFD approach, commercial software Ansys Fluent 19.0 was used to solve the issue. To discretize the convective transport terms, the Ansys-Fluent solver uses a pressure correction-based SIMPLE method with a 2nd order upwind scheme. The convergence dependent variables criterion is set at 0.001. The experimental values of HTC are obtained in this study. CFD techniques are also used to calculate heat transfer coefficients, which are then compared to experimental data. After establishing the issue's key aspects, the technique for addressing the problem is as follows: first, define the solution method, then initialize the solution, and then perform the computation. Create a geometry model in Ansys workbench according to the experimental setup design. Program-controlled meshing and sizing were performed on the

geometry model to get the requisite element size, nodes, and smoothening. After obtaining the necessary element size and meshing, the domain was given a name before the results were obtained. After meshing is complete, the setup is opened in fluent with governing equations such as energy, viscous-standard, standard wall function to be supplied to essential equations to simulate, material generating and boundary conditions to be given, and ways to compute the moment, pressure, and so on. Finally, after converging the equations, results are achieved by adopting a second-order upwind method for the solution.

III. RESULTS AND DISCUSSION

3.1 Temperature Profiles

The annulus of the heat exchanger (HE) is filled with nanofluids, while the tube of the HE is filled with hot water. The temperature profile of hot water passing through the tube of a twin-pipe HE is shown in **Fig. 4**. The temperature of hot water steadily reduced from the input (T_{hi}) to the exit (T_{ho}) of the tube, providing heat to the nanofluid moving in the annulus, as shown in the diagram. **Fig. 5** depicts the temperature profiles of 1.0 percent Cu nanofluids flowing in the annulus of the twin-pipe HE. The temperature of the Cu nanofluid progressively grew from the intake (T_{ci}) to the exit (T_{co}) of the pipe, as it gained heat from the hot water moving through the tube, as seen in the figure.

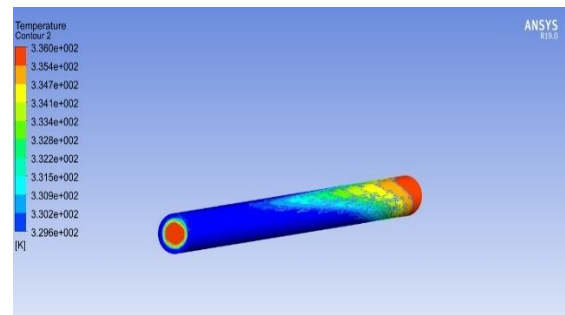


Fig. 4 Temperature profile of hot water flowing in the tube at 0.03 kg/s

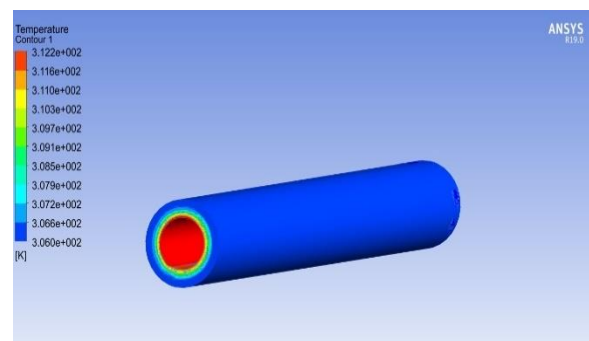


Fig. 5 Temperature profile of 1.0% Cu nanofluid flowing in the annulus pipe at 0.03 kg/s

3.2 Validatiuon of Htc's:

The studies were first carried out using water at various flow rates ($1500 < Re < 5500$). The water in the inner pipe is kept at a mean temperature of 58°C, while the water in the annulus is kept at 36°C.

Experimental and CFD Analysis of GW70 based Cu Nanofluids in a Parallel Flow Heat Exchanger

Because the length of the HE is short, flow rates of (680 <Re< 1900) in the annulus employing nanofluids and base liquid dropped into the emerging laminar area (0.5m). Surface temperatures are calculated using conventional formulae from data books, and energy balance is confirmed on both the hot and cold sides using Newton's law. The Nu numbers of water moving through the tube are calculated using **Gnielinski's** [17] Eq. (4), which is valid for 2300 <Re <10⁶, 0.5 <Pr<2000. The results were compared and confirmed with **Taler's** [18] Eq. (5) for a flow in a tube under UHF boundary conditions, and they were found to be in close agreement, as shown in **Table 2**.

$$Nu = \left[\frac{(\frac{f}{8})(Re-1000)Pr}{1.07+12.7(\frac{f}{8})^{0.5}(Pr^{2/3}-1)} \right] \left[1 + \left(\frac{D_h}{L}\right)^{2/3} \right] \left[\frac{\mu}{\mu_s} \right]^{0.11} \quad (4)$$

$$\text{and } f = [1.58 \ln(Re) - 3.82]^{-2}$$

$$Nu = Nu_{m,q}(Re = 2300) + \left[\frac{(\frac{f}{8})(Re-2300)Pr^{1.008}}{1.08+12.39(\frac{f}{8})^{0.5}(Pr^{2/3}-1)} \right] \left[1 + \left(\frac{D_h}{L}\right)^{2/3} \right] \left(\frac{Pr}{Pr_s}\right)^{0.11} \quad (5)$$

Valid for 2300 ≤ Re ≤ 10⁶ ; 0.1 ≤ Pr ≤ 1000 ;

$$\left(\frac{D_h}{L}\right) \leq 1$$

Where $Nu_{m,q}$ is mean Nusselt number estimated for a combined developing flow in a tube.

The base liquid and nanofluids then flow in the annulus at three different flow rates in experiments. HTC was calculated across a shared surface area. The following values are calculated: LMTD, U_o, HTC (h_{nf}), and Nu. For most nanofluid concentrations, the flow resulted in the laminar zone, showing a simultaneous increase of the hydrodynamical and thermal boundary layer thickness. The experimental Nu number of nanofluids and base liquid is compared and verified with Eq. (6) of **Muzychka and Yovanovich** [19], which is valid for the simultaneous formation of hydrodynamic and thermal boundary layers, developed flow with linear velocity profile, and temperature and FD flow. Between experimental Nu and values calculated using Eq (6)., there is a maximum variation of 2.48 percent.

$$Nu = \left[\left(\frac{2f(Pr)}{\sqrt{Z^+}}\right)^m + \left\{ 0.7515 \left(\frac{fRe}{Z^+}\right)^{1/3} \right\}^5 + \left\{ 3.86 \left(\frac{fRe}{8\sqrt{\pi}}\right)^{1/3} \right\}^5 \right]^{1/5} \quad (6)$$

$$\text{Where } f(Re) = \left[\left[\frac{12}{2\{1-\frac{192}{\pi^5} \tanh(\frac{\pi}{2})\}} \right]^2 + \left(\frac{3.44}{\sqrt{Z^+}}\right)^2 \right]^{1/2} ;$$

$$m = 2.27 + 1.65 * Pr^{1/3} ; Z^+ = \frac{L}{D Re} \quad (6a)$$

3.3 Validation Of Experimental Results With Cfd

Results

The experimental and CFD heat transfer coefficients are found to be in excellent agreement. The temperature difference between the hot water exit (T_{ho}) and the nanofluid outlet (T_{co}) was 1.46 and 1.45 percent, respectively. The

deviations for U_o and HTC are 9.06 and 1.19 percent, respectively. **Table 3** shows these findings.

3.4 Overall Heat Transfer Coefficients And Convective Htc

Fig. 6 shows the fluctuation of U_o and h_{nf} as a function of Re number. The U_o and h_{nf} grew as Re and concentration increased. At Re=1271, a maximum augmentation of 26.2 percent and 46.2 percent in the U_o and h_{nf} was recorded using 1.0 percent copper nanofluids. Improved heat transfer coefficients are achieved by increasing the TC of NF owing to the larger surface area of NP's, particle rearrangement, and alteration of the thermal boundary layer due to the presence of nanoparticles. In their investigation, **Lahari et al.** [20] reported a similar trend.

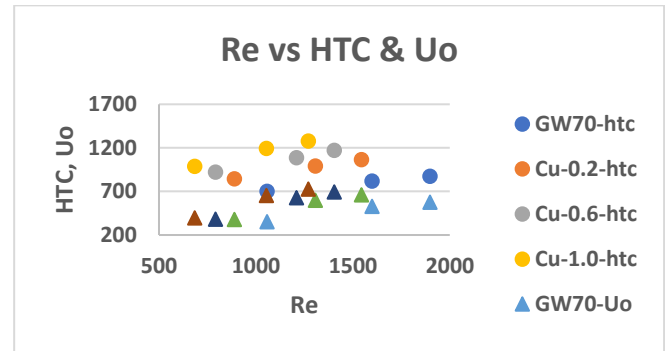


Fig.6: Re Vs HTC & Uo

IV. CONCLUSION

Ansys Fluent 19.0 was used to simulate steady-state computational fluid dynamics (CFD) models. The influence of Reynolds number on nanofluid flow dynamics is investigated. With increasing 'φ' and Re, the HTC improved. The findings of the CFD and experimental data of T_{ho}, T_{co}, U_o, and HTC are quite close, with maximum deviations of 1.46, 1.45, 9.06, and 1.19 percent, respectively. For a 1.0 percent concentration of Cu nanofluids at 0.03 kg/s, the U_o and HTC are increased by 26.2 and 46.2%, respectively.

ACKNOWLEDGMENT

The first author acknowledges the support of the R&I council and School of Mechanical Engineering, REVA University in Bangalore, as well as the Department of Mechanical Engineering at Malla Reddy College of Engineering and Technology in Hyderabad.

REFERENCES

1. M. Omidi, M. Farhadi and M. Jafari, A comprehensive review on double pipe heat exchangers. *Applied Thermal Engineering*, 110, pp.1075-1090, 2017.
2. A.M. Abdulateef, S. Mat, J. Abdulateef, K. Sopian and A.A. Al-Abidi, Geometric and design parameters of fins employed for enhancing thermal energy storage systems: a review. *Renewable and Sustainable Energy Reviews*, 82, pp.1620-1635.2018.
3. L. Aresti, P. Christodoulides and G. Florides, A review of the design aspects of ground heat exchangers. *Renewable and Sustainable Energy Reviews*, 92, pp.757-773, 2018.

4. Shirvan, K.M., Mirzakhani, S., Kalogirou, S.A., Öztop, H.F. and Mamourian, M., 2017. Heat transfer and sensitivity analysis in a double pipe heat exchanger filled with porous medium. *International Journal of Thermal Sciences*, 121, pp.124-137, 2016.
5. E. Abu-Nada, Application of nanofluids for heat transfer enhancement of separated flows encountered in a backward-facing step, *Int. J. Heat Fluid Flow* 29 (2008) 242–249.
6. A.S. Kherbeet, H.A. Mohammed, B.H. Salman, The effect of nanofluids flow on mixed convection heat transfer over microscale backward-facing step, *Int. J. Heat Mass Transf.* 55 (2012) 5870–5881.
7. T. Hussein, A.J. Shkariah, S.N. Kazi, A. Badarudin, CFD simulation of heat transfer and turbulent fluid flow over a double forward-facing step, *Math. Probl. Eng.* 2013 (2013) 1–10.
8. Pak, Bock Choon, and Young I. Cho. "Hydrodynamic and heat transfer study of dispersed fluids with submicron metallic oxide particles." *Experimental Heat Transfer an International Journal* 11.2 (1998): 151-170.
9. Xuan, Yimin, and Qiang Li. "Heat transfer enhancement of nanofluids" *International Journal of Heat and fluid flow* 21.1 (2000): 58-64.
10. Heris, S. Zeinali, S. Gh Etamad, and M. Nasr Esfahany. "Experimental investigation of oxide nanofluids laminar flow convective heat transfer" *International Communications in Heat and Mass Transfer* 33.4 (2006): 529-535.
11. Kolade, Babajide, Kenneth E. Goodson, and John K. Eaton. "Convective performance of nanofluids in a laminar thermally developing tube flow" *Journal of Heat Transfer* 131.5 (2009): 052402.
12. Duangthongsuk, Weerapun, and Somchai Wongwises. "Heat transfer enhancement and pressure drop characteristics of TiO₂-water nanofluid in a double-tube counter-flow heat exchanger" *International Journal of Heat and Mass Transfer* 52.7 (2009): 2059-2067.
13. Rea, Ulzie, et al. "Laminar convective heat transfer and viscous pressure loss of alumina-water and zirconia-water nanofluids" *International Journal of Heat and Mass Transfer* 52.7 (2009): 2042-2048.
14. Jung, Jung-Yeul, Hoo-Suk Oh, and Ho-Young Kwak. "Forced convective heat transfer of nanofluids in microchannels" *International Journal of Heat and Mass Transfer* 52.1 (2009): 466-472.
15. S. Lee, and S. Choi, "Application of metallic nanoparticle suspensions in advanced cooling systems", *Recent advances in solid/structures and applications of metallic materials*, PVP ASME, vol. 342/MD-vol 72, pp. 227-234, 1996.
16. MLRC Lahari, P H V Sessa Talpa Sai, KS Narayanaswamy, KV Sharma (2021) Thermophysical Properties of Copper and Silica Nanofluids in Glycerol- Water Mixture Base Liquid. *J Thermodyn Catal* Vol.12: Iss. 1.
17. V. Gnielinski, New equations for heat and mass transfer in turbulent pipe and channel flow, *Int. Chem. Eng.* 16 (1976) 359–368.
18. Dawid Taler, A new heat transfer correlation for transition and turbulent fluid flow in tubes, *International Journal of Thermal Sciences* 108 (2016) 108-122.
19. Muzychka, Y.S. and Yovanovich, MM, Laminar Forced Convection Heat Transfer in the Combined Entry Region of Non-Circular Ducts, *Transactions of the ASME*, Vol. 126, February 2004, 54–61.
20. MLRC Lahari, PHV Sessa Talpa Sai, KSN Swamy, N Krishnamurthy, K Sharma, Investigation on heat transfer properties of water-based TiO₂-ZnO nanofluids, *IOP Conf. Ser. Mater. Sci. Eng.* 455, 2018, 12092.



Dr. P H V Sessa Talpa Sai, is presently working as Professor and Director, Malla Reddy College of Engineering and Technology (Autonomous). He obtained his Doctoral degree from JNTU, Hyderabad. He is having 16 years of industry and 16 years of academic and research experience. He is visiting faculty at Lincoln University College (LUC), Malaysia. He is guiding five Ph.D. Scholars from different Universities. He has 52 International and National Publications/Conference proceedings, 12 patents published, and 6 books/book chapters to his credit. His research interests are Nano Composite Materials for Solar Energy Conversion and Storage, Biofuels and Lubricants, Nanofluids in Energy and Heat Transfer applications, etc.



Dr. Viswanatha Sharma Korada, Emeritus Professor, Centre for Energy Studies, JNTUH is having 40 years of experience in academics and research. He also served in reputed institutions such as University Malaysia Pahang (UMP) from 2009 to 2012 and University Technology Petronas (UTP) from 2014 to 2016. He has published numerous peer-reviewed articles in journals dealing with Thermal fluid problems, Heat Transfer using Nanofluids, Energy Systems etc. and guided 20 doctoral students. His research interests are Nanofluid Heat Transfer, Turbulent Convection, Solar Thermal Energy Conversion, Electronic Cooling, Packed Bed Thermal Energy Storage, Boiling Heat Transfer.



Dr. K S Narayanaswamy is presently working as Professor & Director, School of Mechanical Engineering, Reva University, Bangalore. He obtained his doctoral degree from Bangalore University and is having 17 years of teaching and research experience. He is guiding four Ph.D. Scholars from different Universities. He has more than 20 International and National Publications/Conference proceedings, 3 patents published, and 1 book/book chapter to his credit and guided many PG and UG students' projects. He won the best teacher award in the year 2015



Mr. P Haseena Bee, is presently working as Associate Professor, Malla Reddy College of Engineering and Technology (Autonomous) and Research Scholar of School of Mechanical Engineering, REVA University, Bangalore. She obtained her B. Tech and M. Tech degrees from JNTU-Hyderabad with distinction. She has 05 International and National Publications/Conference proceedings, 2 Patents, 2 Books/Book Chapters to her credit and guided many PG and UG students' projects. Her research interests are Nanofluids in Manufacturing applications, Solar Energy Conversion and Storage Devices.



Dr. Devaraj S, is presently working as a Professor at, School of Mechanical Engineering, Reva University, Bangalore. He obtained his doctoral degree from IIT, Madras, and is having 28 years of teaching and research experience. He is guiding four Ph.D. Scholars from different Universities. He has more than 15 International and National Publications/Conference proceedings.

AUTHORS PROFILE



Ms. M L R Chaitanya Lahari, is presently working as Associate Professor, Malla Reddy College of Engineering and Technology (Autonomous) and Research Scholar of School of Mechanical Engineering, REVA University, Bangalore. She obtained her B. Tech and M. Tech degrees from JNTU with distinction. She has 6 years of Teaching and Research experience apart from 2 years of industry exposure. She has 10 International and National Publications/Conference proceedings, three Patents, 3 books/book chapters to her credit, and guided many PG and UG students' projects. Her research interests are Nanofluids in Energy and Heat Transfer applications, Solar Energy Conversion and Storage Devices, Design and Management of Thermal Systems, Heat Transfer, Non-Conventional Energy Sources.